



RUO

For research use only -  
For US Markets



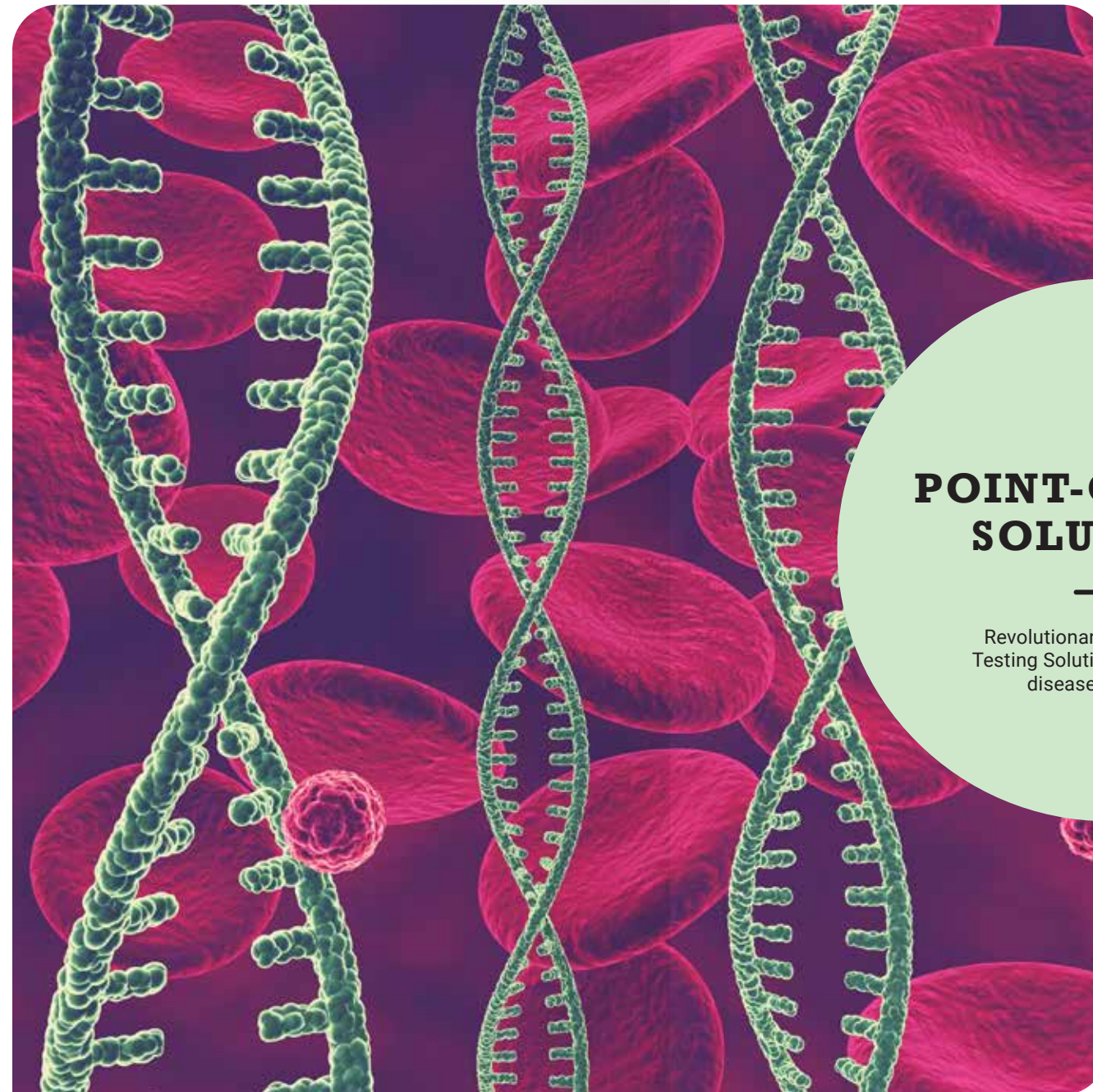
## Genes2Me Pvt. Ltd.

1105, 11th Floor, Tower B, SAS Tower, Medicity,  
Sector - 38, Gurgaon - 122 001, Haryana, India

Tel : + 91 18001 214030 / + 91 88000 23600

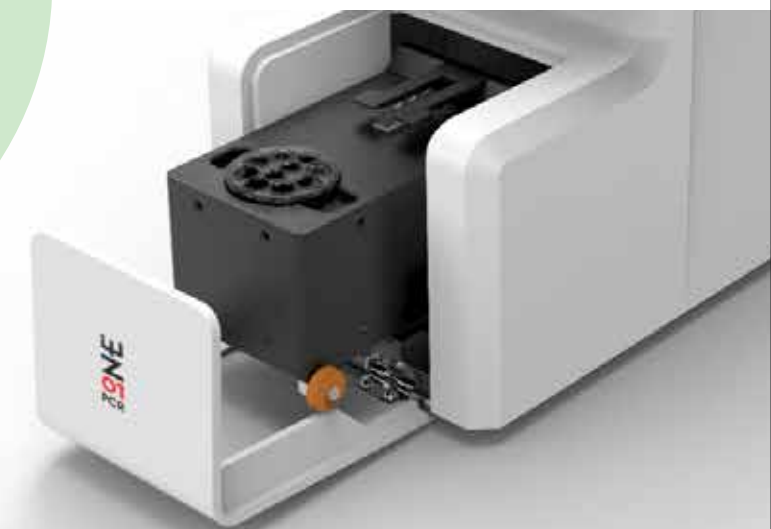
E-mail : [contact@genes2me.com](mailto:contact@genes2me.com) [www.genes2me.com](http://www.genes2me.com)

All products listed in the catalogue are the products of Genes2Me Private Limited. Apart from that, all other product names, trademarks and logos wherever used in the catalogue are the property of their respective owners. For more information, visit [www.genes2me.com](http://www.genes2me.com).



## POINT-OF-CARE SOLUTIONS

Revolutionary Point-of-Care  
Testing Solutions for accurate  
disease detection





## State-of-the-Art 150,000 Sq. Ft. Fully Automated Manufacturing Facility in Manesar, India



We take pride in being the leading manufacturers of highly accurate and robust IVD solutions across the country at the most competitive prices to make impactful changes in the diagnostic & patient care industry.

Since its inception in 2016, Genes2me has been constantly striving towards setting a benchmark in the diagnostics space by introducing premium quality (Made in India) diagnostic kits which are CE-IVD, ISO-13485, and ISO 9001:2016 certified, assuring our clients of unparalleled quality and compliance with international standards. Our product portfolio includes molecular POC testing solutions, RT-PCR kits, rapid antigen/antibody testing kits, and molecular biology reagents. We have broadened our horizons to include Next Generation Sequencing clinical panels to cater to personalised medicine for every patient.

The company's flagship products like Rapi-Q/ Rapi-Q HT Point-of-Care (POC) RT-PCR devices are trailblazing inventions that are changing the paradigm of molecular POC testing across the world. These platforms help to detect infectious diseases with utmost sensitivity and least turnaround time thus helping in effective treatment and timely containment of the infection.

Our NGS clinical panels are designed to encompass testing solutions for oncology, liquid biopsy, cardiovascular diseases, neurological disorders, and HLA typing. These panels are compatible with the most popular sequencing platforms, Illumina, MGI, Thermo Fisher and Element Bio Sciences. We also offer cloud-based interpretation bioinformatics software with our NGS clinical panels which is designed to interpret data in a flexible and user-friendly manner. We ensure the highest standards for compliance at our lab and manufacturing site and have thus obtained all necessary accreditations and licences to run the same. Our lab is accredited by the National Accreditation Board for Testing and Calibration Laboratories (NABL), ISO 9001, and ISO 14001. Our manufacturing site is approved by Drugs Controller General of India (DCGI) & is fortified by the prestigious ISO-13485 accreditation.

Novel, Robust  
& Cost-Effective  
Molecular and  
Genetic Diagnostic  
Solutions



**ONE**  
PCR

## FULLY AUTOMATED NUCLEIC ACID DETECTION SYSTEM



1 Sample upto  
20 Targets



Compatible with  
50+ Detection Assays



- Extraction
- Liquid Handling
- Amplification
- Analysis

## Automated, All-in-One Molecular Detection for Efficiency & Accuracy

OnePCR is an all-in-one automated detection system that offers a streamlined sample to result workflow, eliminating the need for sample transfers between different instruments, thereby reducing the overall run-time and minimizing the risk for human error.

It is based on cartridge technology, seamlessly integrating nucleic acid extraction and Real-time PCR functionalities into one streamlined instrument, maximizing efficiency and convenience for the user.

Observe real-time amplification data, Ct values, & determine the positive or negative status of the sample.

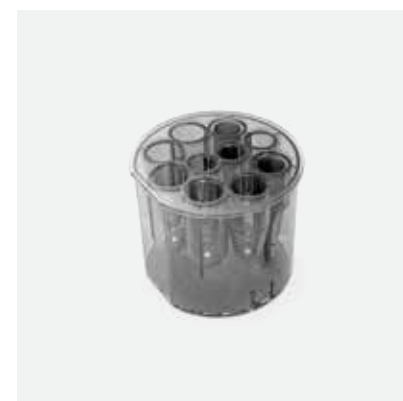


## RAPID RESULTS

Highly sensitive & automated device with innovative cartridge design for nucleic acid extraction and RT-PCR based fluorescence detection

**AUTOMATIC** **INTEGRATED** **ACCURATE** **BIO-SAFETY**

*Special Function Modules*



1 sample 20 target detection

Five channel fluorescence  
based detection system

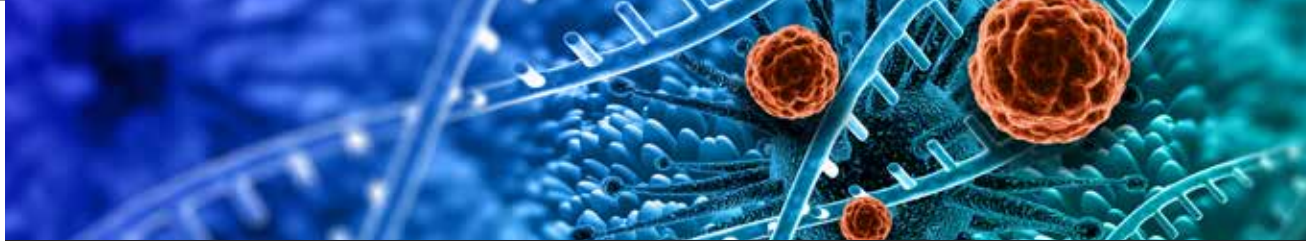
Automated Analysis  
& Reporting

Ready to use cartridge  
based assays

Uncompromised  
detection accuracy

Standalone operation with  
precise and robotic liquid  
handling





# One Answer to all your needs with **Highest Sensitivity**

**50+**  
Assays

**SEPSIS  
AMR  
BCR-ABL  
MTB & MDR-TB  
JAK-2  
STI-7/13  
HPV-14/28  
HLA B27  
RESPIRATORY  
PML-RARA  
HIV / HBV / HCV**



Ordering Information	CAT #	Description
	G2MBR40661	Ultra Fast POC Rapid RT PCR System (One PCR)

**ONE**  
**PCR**

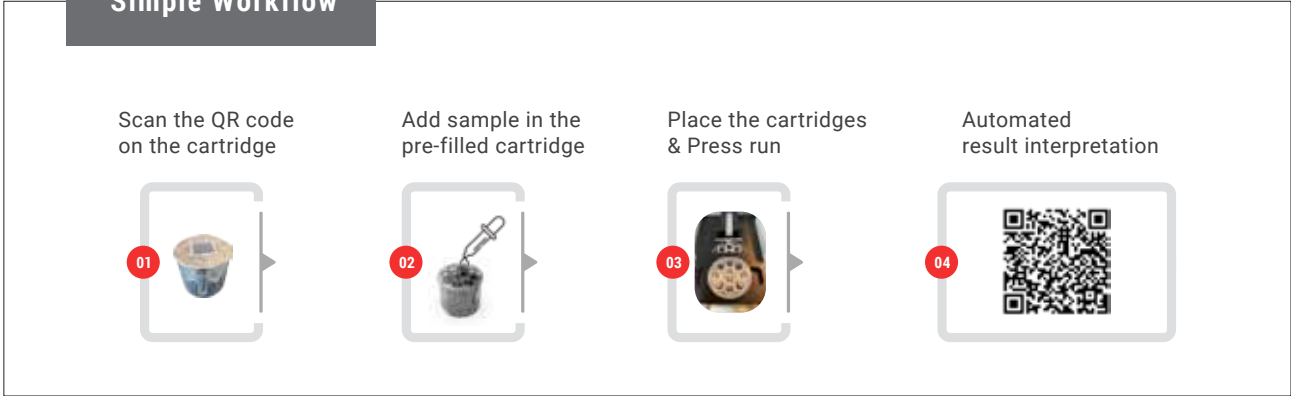
**Innovative,  
user-friendly** design  
for seamless operation

- Ergonomic design for ease of use - compact, light weight machine with built-in intuitive display
- No manual intervention - direct sample to result interpretation
- Unfettered by stringent lab settings - the machine can be operated outside the conventional lab set-up and can be operated by even semi-skilled personnels
- Comes with a built-in QR-Code scanner feature - Provides easy access to experimental protocols
- Built in HEPA filters and UV light - sterilization for efficient results
- Capable of connecting to multiple independent modules for multi-sample analysis.



Scan the **QR code on the cartridge** for quick access to the experiment protocol.

### Simple Workflow



# Scalable design for integrating Multiple Devices together

Control multiple independent modules centrally with a single tablet



## Ideal for Testing at



HOSPITALS & CLINICS



AIRPORTS AND FIELD TESTING



LABORATORIES, MOBILE VANS & COLLECTION CENTER



MEDICAL EMERGENCY WARDS



PHARMACIES



REMOTE/ RURAL AREAS

# Broad Range of High Sensitivity Kits

Available

Cat No.	Commercial Name
<b>Oncology</b>	
G2MBR4-0512	BCR-ABL Real-Time PCR Kit
G2MBR4-0841	BCR-ABL Quantitative Real Time PCR Kit
G2MBR4-0842	HLA B27-Q Real Time PCR Kit
G2MBR4-0566	PML-RARA Real Time PCR Kit
G2MBR4-0668	JAK-2-Q Real Time PCR Kit
<b>Respiratory Diseases</b>	
G2MBR4-0515	MTC-Q Real-Time PCR Kit
G2MBR4-0517	MTB-NTM Multiplex Real-Time PCR Kit
G2MBR4-0843	TB-Q Comprehensive Real-Time PCR Kit
G2MBR4-0529	CoVFlu One Step RT PCR Kit
G2MBR4-0530	CoVFlu-II One Step RT PCR Kit
G2MBR4-0042	COVIDtect Multiplex RT PCR kit for SARS-CoV- 2
G2MBR4-0528	Rapi-Q Multiplex Real Time PCR Kits for COVID-19
G2MBR4-0524	Adeno-Q Real-Time PCR Kit
G2MBR4-0522	Measles-Q Real Time PCR Kit
G2MBR4-0518	Influenza A/B-Q Real Time PCR Kit
G2MBR4-0526	RSV-Q Real Time PCR Kit
<b>Reproductive Health Disorders</b>	
G2MBR4-0537	Syphilis-Q Real Time PCR Kit
G2MBR4-0531	SKU 1 - HPV-Q Real-Time PCR Kit
	SKU 2 - HPV-Q+ Real time PCR kit
G2MBR4-0532	HPV-Q comprehensive Real Time PCR Kit
G2MBR4-0538	STI7-Q Real-Time PCR Kit
G2MBR4-0539	STI-Q comprehensive Real Time PCR Kit
G2MBR4-0547	VZV-Q Real Time PCR Kit
<b>Infectious Diseases</b>	
G2MBR4-0543	BK-Q Real Time PCR Kit for BK virus
G2MBR4-0544	EBV-Q Real Time PCR Kit
G2MBR4-0545	Nipah-Q Real-Time PCR Kit
G2MBR4-0551	Sepsis-Q Real Time PCR Kit
G2MBR4-0548	B19-Q Real-Time PCR Kit
G2MBR4-0569	CMV-Q Real Time PCR Kit*
<b>Blood Borne Infections</b>	
G2MBR4-0382	HBV-Q Real-Time PCR Kit for Hepatitis B Virus*
G2MBR4-0380	HIV-Q Real-Time PCR Kit for Human immunodeficiency virus*
G2MBR4-0381	HCV-Q Real-Time PCR Kit Hepatitis C Virus*
G2MBR4-0555	3Hdteq-Q Real Time PCR Kit*
<b>Vector Borne Infections</b>	
G2MBR4-0556	DENGUE-Q Real Time PCR Kit
G2MBR4-0557	Malaria-Q Real-Time PCR Kit
G2MBR4-0562	W. Nile-Q Real Time PCR Kit for West Nile Virus
G2MBR4-0561	J.encephalitis -Q Real Time PCR Kit for Japanese encephalitis
G2MBR4-0563	Para-Q Multiplex Real Time PCR kit
G2MBR4-0558	Chikungunya-Q Real Time PCR Test Kit
G2MBR4-0559	Zika-Q Real Time PCR kit
G2MBR4-0560	Y. Fever-Q Real Time PCR kit

Upcoming

Cat No.	Commercial Name
<b>Oncology</b>	
G2MBR4-0845	FLT3-Q Real-Time PCR Kit
<b>Respiratory Diseases</b>	
G2MBR4-0519	B. Pertussis-Q Real Time PCR Kit
G2MBR4-0520	S. Pneumonia-Q Real Time PCR Kit
G2MBR4-0521	M. Pneumonia-Q Real Time PCR Kit
G2MBR4-0525	MERS-Q Real Time PCR Kit
<b>Reproductive Health Disorders</b>	
G2MBR4-0533	N. Gonorrhoeae -Q Real Time PCR Kit
G2MBR4-0534	T. Vaginalis-Q Real Time PCR Kit
G2MBR4-0535	U. Urealyticum-Q Real Time PCR Kit
G2MBR4-0536	M. Hominis -Q Real Time PCR Kit
G2MBR4-0537	Syphilis-Q Real Time PCR Kit
G2MBR4-0540	HSV-Q Real Time PCR Test Kit
G2MBR4-0541	Toxo-Q Real Time PCR Kit*
G2MBR4-0846	RCP-Q Comprehensive Real Time PCR kit
<b>Infectious Diseases</b>	
G2MBR4-0542	H. Pylori-Q Real Time PCR Kit
G2MBR4-0549	C. albicans (CA)-Q Real Time PCR Kit
G2MBR4-0550	Rubella-Q Real Time PCR Kit*
G2MBR4-0546	Rota-Q Real Time PCR kit
G2MBR4-0567	MCP-Q Real Time PCR kit
G2MBR4-0844	GCP-Q Comprehensive Real Time PCR kit
G2MBR4-0568	AMR-Q Real Time PCR kit
<b>Genetic Disorders</b>	
G2MBR4-0565	SCA-Q Real Time PCR Kit





Point-of-Care  
RT-PCR SYSTEM



For testing of  
1-8 samples  
simultaneously



Compatible with 50+  
detection assays

Light weight & Compact (1.4 Kg)  
Can be operated with Portable Lithium Battery Pack



Commercial Name	Cat No.
Rapi-Q POC Rapid RT PCR System	G2MBR4-0019



KEY FEATURES

<b>Four Channel</b> - Eight well Block Design	Capable of working with <b>Car Battery/</b> Lithium Battery- especially suitable for quick field inspections	<b>Direct connectivity</b> with Portable handheld devices
High Temperature control Accuracy with the help of <b>Constant Current Circuit</b>	<b>Powerful Software Analysis Function</b> - can perform qualitative & quantitative analysis	<b>Adopting Side Scan Technology</b> - the detection distance is short and the fluorescence collection signal is stable
<b>Protection Functions</b> - Over current, Over- temperature, power-off data self-recovery, etc.	<b>Environment Friendly</b> - Holds advantage of energy saving, environmental protection & long service life.	Ideal for <b>Testing at Public Places</b> with a confined space

<b>Standalone Operation</b>	 PORTABLE BATTERY PACK	 BLUETOOTH	 BARCODE READER
-----------------------------	--	--	---



Built-in display & automated result analysis

RAPI-Q SPECIFICATIONS

Sample Capacity	8 rxn
Reaction Volume	10-50µl
MAX. Ramp Rate	6°C/s
Temperature Range	4-100°C
Uniformity	±0.2°C
Accuracy	±0.15°C
Hot Lid Temperature	30 - 110°C (Adjustable, default 105°C)
Excitation wavelength	455 - 650nm
Emission wavelength	510 - 750nm
Factory Calibrated Dyes	F1: FAM/SYBR Green I, F2: HEX/VIC/JOE/TET, F3: ROX, F4: CY5/LIZ
Light Source	4 pcs highly efficient LED
Detection	High sensitivity photoelectric detector
Dynamic Range	1-10 <sup>10</sup> Copies
Sensitivity	1 copy
Date Export Formats	Report can be printed
Printing	excel, cvs, txt
Dimension, Net Weight	180(L)×150(W)×90(H), 1.4 KG
Power	100 - 240 VAC, 50/60 Hz or compatible with battery backup



Automated results analysis software which delivers positive/ negative reporting for every target in the sample along with its Ct values and amplification curves.



POC RAPID RT-PCR SYSTEM

Revolutionary Point-of-Care Testing Solution which does not require any special lab environment or additional equipment

- Highly Accurate Fluorescent probes based detection method which supports One-step PCR Method for different applications
- Delivers Result Interpretation as Positive/ Negative along with Ct values



Commercial Name	Cat No.
Rapi-Q HT POC Rapid RT-PCR System	G2MBR4-0300

- 4 Channels
- Dual block 16-Well Design
- Can run two independent programs simultaneously



- 7 inch high definition touch screen and embedded Win10 Operating System
- Unique hot lid lock design
- One touch to open the lid
- Power Failure, Fault Protection and Alarm Function
- Factory Calibrated Dyes: F1: FAM, F2: HEX, F3: ROX, F4: CY5

- Preset Program settings for multiple RT-PCR assays and fluorescent detection
- Data Analysis Function: Qualitative, Quantitative, Melting curve analysis
- Data Export Formats: excel, csv, txt
- Software Upgradation (remotely)
- Individual sample report
- Complete batch report

## KEY FEATURES

From Direct Samples to Results in <b>30-45 Minutes</b>	<b>Pipette Free Operation</b> Eliminating the need of Technically Skilled Person	<b>High Sensitivity (99%),</b> Specificity and Accuracy in results
<b>Four Targets Analysis</b> Allowing detection of multiple genes/ infections simultaneously	<b>Lyophilized Format Kits</b> Making the kit stable at Room Temperature for upto 12 months	<b>Dual-block design</b> supports two independent protocols simultaneously, processing up to 32 samples (16 per block).
<b>Extensively Validated</b> on a wide variety of Research Samples	Parallel detection of targets with <b>Endogenous Internal Control</b>	<b>Automated Interpretation</b> Analysis & Reporting

## RAPI-Q HT SPECIFICATIONS

Sample Capacity	32 (16 per block)	Size	300(L) x 267(W) x 198(H) mm
Temperature Range	4-100°C	Weight	11KG
Temperature Accuracy	± 0.25°C	Voltage & Power	Input - 220 Volt-50Hz, Output - DC30V-20A, 600W
Maximum Ramp Rate	8°C/s	Communication Interface	USB 2.0
System Startup time	<30 seconds	Operating Environment Temperature	18-35°C
Excitation Wavelength:	F1: 470nm, F2: 523nm, F3: 571nm, F4: 628nm	Sensitivity	1 Copy
Emission Wavelength	F1: 525nm, F2: 571nm, F3: 612nm, F4: 692nm	Instrument Noise Level	<65dB
Excitation	Long Life LED		
Detection	High sensitivity photoelectric Detector		

**Standalone**  
Operation with  
Direct Connectivity  
to Printer, Barcode  
Scanner & LIS



THERMAL PRINTER



BLUETOOTH

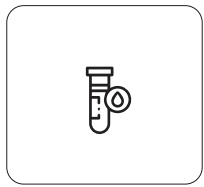


WiFi



BARCODE READER

## EASY STEPS TO RESULT



Sample Collection



Nucleic Acid  
Extraction



RT-PCR run



Automated Report  
Generation



# RAPi-X16

## Fast & Automated Nucleic Acid Extraction System

Genes2Me Rapi-X16 nucleic acid extraction system ensures homogenous suspension and distribution of magnetic beads, leading to higher DNA/ RNA yields.



Magnetic Bead based Extraction System

Faster Processing Time  
15 to 20 minutes

Easy to Use, Stand-alone operation

Pre-filled Ready to use reagents for multiple sample types



### KEY FEATURES

Complete range of kit reagents for faster & efficient extraction and purification of DNA, RNA and Total nucleic acids	Temperature uniformity & accurate controls
User friendly Interphase for real time display of running programs	HEPA filter and UV Light for decontamination
High Recovery Rate of Magnetic Beads >98%	Suitable for Extraction & Purification of various Research samples

- **Sample Types:** Blood, Plasma, Serum, Nasopharyngeal & Oropharyngeal Swabs, Vaginal & Cervical swabs, Saliva, Sputum, Urine, Fresh tissue and other body fluids
- Can process 1 - 16 samples per run
- Extraction time ~ 15 minutes
- Working volume: 100-1000ul
- Sample Elution volume: 50-100ul

Commercial Name	Cat No.
Rapi-X16 Automated Nucleic Acid Extraction System	G2MBR4-0287

O1XRT

One for all Nucleic Acid Extraction Kit

Genes2Me's OneXtract Total Nucleic Acid Extraction Kit is an automation-compatible solution designed for processing diverse Research samples, delivering high-quality, intact nucleic acids.



- 01

One Unique Solution for total Nucleic Acid Extraction
- ✓

Ready-to-use Prefilled Plate Format
- 🌡️

Room Temperature Optimized Protocols
- ⚙️

High Quality Purified Nucleic Acid (DNA/ RNA) suitable for downstream applications
- 🧴

Flexible to Multiple Samples Types
- 🕒

Processing Time ~15 minutes

Sample Types

- Whole Blood
- Saliva
- Nasopharyngeal/ Oropharyngeal Swabs
- Vaginal & Cervical swabs
- Plasma/ Serum
- Urine
- Fresh Tissue
- Other Body Fluids

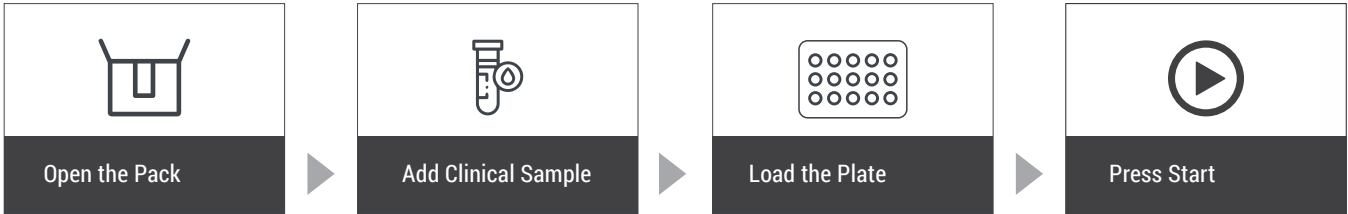
Magnetic bead based extraction

Easy and automated workflow

Universal solution for different sample types

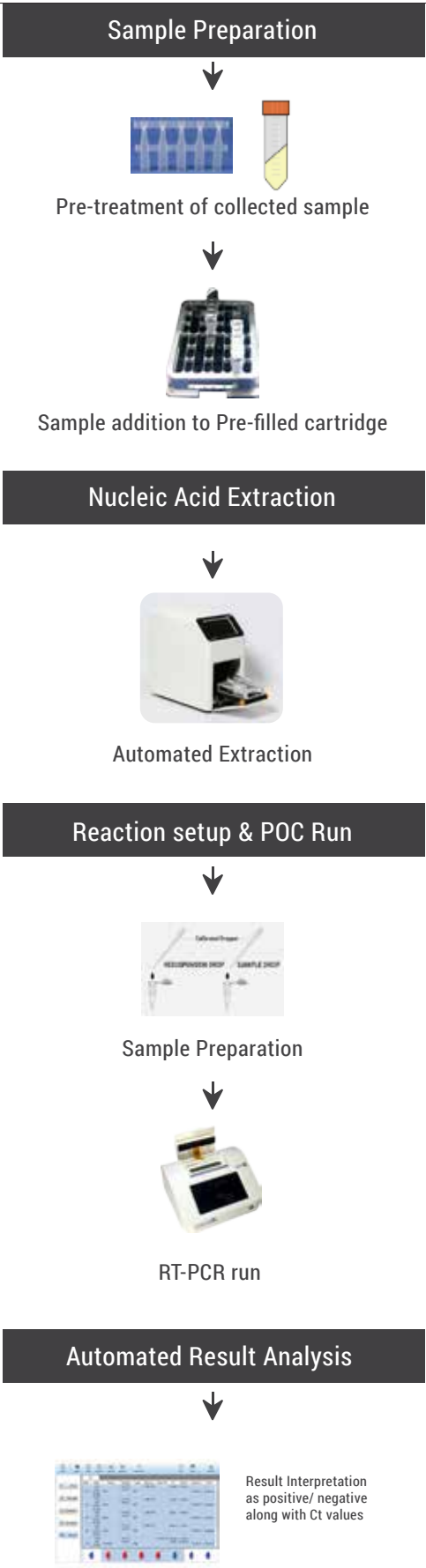
Available in different pack sizes- 1/8/16 rxns

Easy to Process Steps



Cat No.	Pack Size
G2MBR4-0176-NAE(PF) MagNXT Tissue & Body Fluids (OneXtract)	96/ 192/ 480 Preps

Point-of-care workflow





# High sensitivity kits for Point-of-care RT-PCR testing



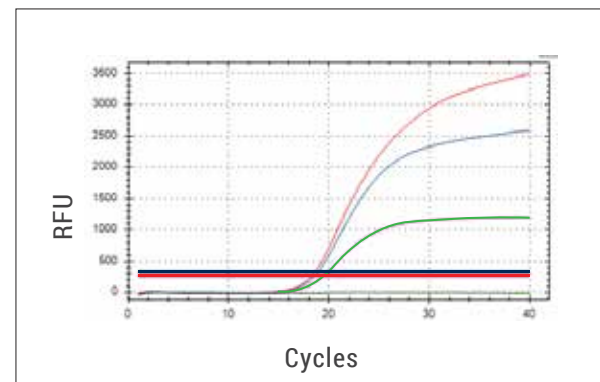
## HPV Detection Solutions

Human papillomavirus infection (HPV infection) is caused by a DNA virus from the Papillomaviridae family leading to major health problems, including genital warts and cancers.

Sample Source  
Vaginal/  
Cervical Swab

### HPV-Q Real Time PCR Kit

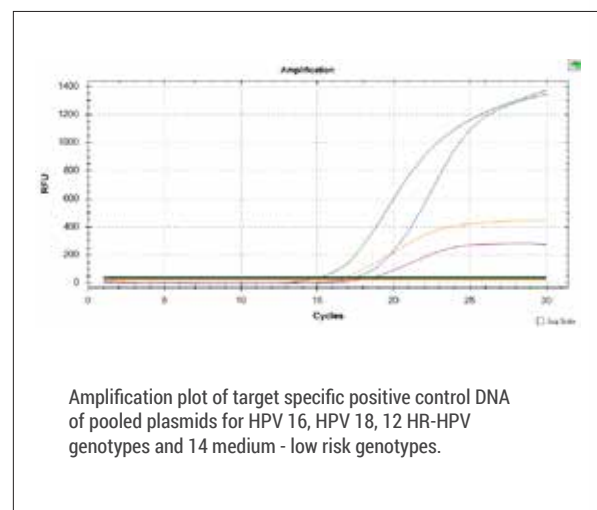
- Allows the detection of 14 high risk HPV genotypes
- Differential identification of E6/7 genes of HPV16 and HPV18 genotypes
- Qualitative detection of 12 High Risk genotypes including HPV 31, 33, 35, 39, 45, 51, 52, 56, 58, 59, 66, 68.



Amplification patterns obtained with the multiplex assay on plasmid DNA ( $10^5$  copies of plasmid/ $\mu$ L). The curves were generated by amplification of target specific positive control DNA of pooled plasmids for HPV16, HPV18 and other 12 HR- HPV genotypes.

### HPV-Q Comprehensive Real Time PCR Kit (28 Genotypes)

- Comprehensive Real Time PCR in vitro Screening test for the detection of 28 HPV genotype including high risk HPV and low risk HPV genotypes in DNA extracted from Research samples
- Differential identification of HPV16 and HPV18 genotype along with the Qualitative detection of :
  - 12 High Risk genotypes including HPV 31, 33, 35, 39, 45, 51, 52, 56, 58, 59, 66, 68
  - 14 Medium-Low risk genotypes including HPV 6, 11, 83, 54, 26, 81, 61, 44, 40, 43, 42, 82, 53, 73



Amplification plot of target specific positive control DNA of pooled plasmids for HPV 16, HPV 18, 12 HR-HPV genotypes and 14 medium - low risk genotypes.

## TB Detection Solutions

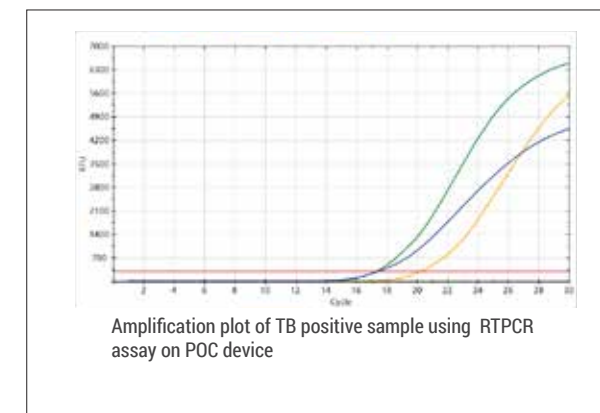
Complete testing solution for Tuberculosis



### TBdtect

#### MTC-Q Real Time PCR Kit

- Detection of Mycobacterium tuberculosis infection in Research samples
- Targets Covered: IS6110, MPt64 genes
- Internal Control

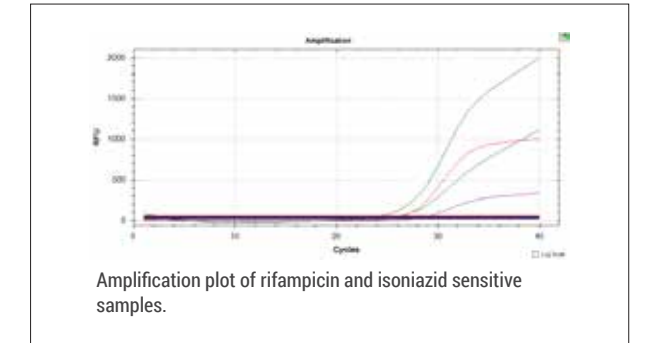


Amplification plot of TB positive sample using RT-PCR assay on POC device

### TBfind

#### TB-Q Comprehensive Real Time PCR Kit

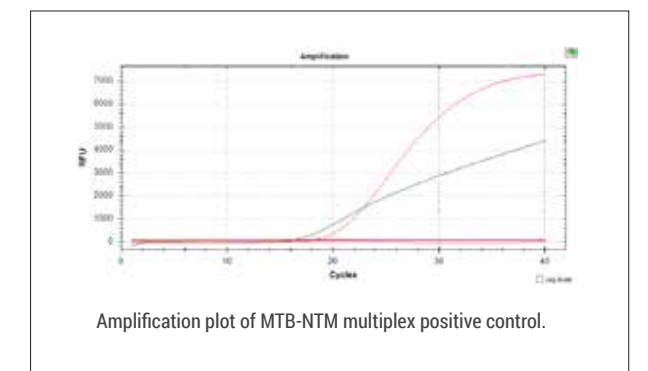
- Allows for the simultaneous detection of MTB and MDR-TB (multi drug resistant tuberculosis) in human samples such as sputum, bronchoalveolar lavage (BAL), and culture specimens.
- Covers 16 mutations for the two first line drugs namely, Isoniazid (INH) and Rifampicin (RIF)
- Also includes the detection of four mutations in the katG gene, one mutation in the inhA gene, and 81 bp in the RpoB gene in patients with multidrug-resistant tuberculosis infection.



Amplification plot of rifampicin and isoniazid sensitive samples.

### MTB-NTM Multiplex Real Time PCR Kit

- Detects Non-tuberculosis mycobacterium infections causing lung diseases/ non causative agents of TB.
- Targets Covered: multiple NTM genotypes including M. abscessus; M. avium; M. fortuitum; M. kansasii; M. intracellulare; M. massiliense; M. chimaera
- Accurate Detection and Differentiation of tuberculosis with NTM
- Targets Covered : NTM specific - KU gene  
MTB specific - MPt64 gene
- Internal Control



Amplification plot of MTB-NTM multiplex positive control.



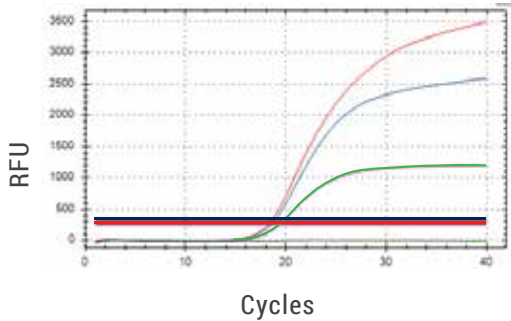
# 3H(HIV, HCV, HBV) Detection Solutions

Multiplex qualitative assay for simultaneous detection of Hepatitis C virus, Hepatitis B virus & Human Immunodeficiency virus in samples

## 3Hdetect - Q

Multiplex Real Time PCR Kit

Individual target specific primers and probes have been designed for multiple virus detection in a single reaction through separate fluorescent channels



Amplification plot of 3H positive control using one step RTPCR assay on POC device

One tube assay for differentiation & identification of HCV, HBV & HIV



**Sample Source**  
Serum/ plasma



**High Sensitivity and Specificity**



**Quick Turn Around Time**

One step RT-PCR kit with ready-to-use reagents specific for multiple targets based on Taqman chemistry.

### Gene targets covered :

- HCV specific: Poly gene
- HBV specific: CR gene
- HIV specific: pol, gag genes

# STI Detection Solutions

STI-Q Comprehensive Real Time PCR Kit is a multiplexed real-time PCR kit for the detection of major Sexually Transmitted Infections (STIs) causative pathogens from Research samples.

## STI-Q Comprehensive Real Time PCR Kit

*Comprehensive Multiplex  
Real Time PCR Kit*

Aims to qualitatively detect & differentiate causative organisms for Sexually Transmitted Infections in Research samples along with parallel detection of Internal control

### Pathogens Covered

- Mycoplasma genitalium
- Mycoplasma hominis
- Neisseria gonorrhoeae
- Trichomonas vaginalis
- Ureaplasma parvum
- Ureaplasma urealyticum
- Herpes Simplex Virus -1
- Herpes Simplex Virus -2
- Treponema pallidum (Syphilis)
- Candida albicans
- Toxoplasma gondii
- Haemophilus ducreyi
- Chlamydia trachomatis

## STI7-Q Real Time PCR Kit

*Multiplex Real Time PCR Kit*

Qualitative detection & differentiation of seven major sexually transmitted infections (STIs) causative pathogens in Research samples along with parallel detection of Internal control

### Pathogens Covered

- Mycoplasma genitalium
- Mycoplasma hominis
- Neisseria gonorrhoeae
- Trichomonas vaginalis
- Ureaplasma parvum
- Ureaplasma urealyticum
- Herpes Simplex Virus-1
- Herpes Simplex Virus-2
- Chlamydia trachomatis



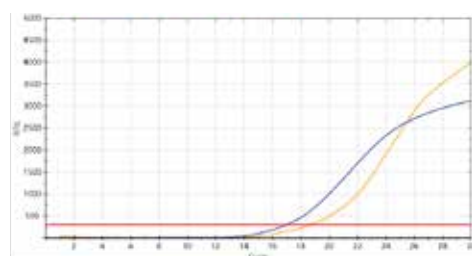
## Oncology Detection Solutions

### BCR-ABL-Q Real Time PCR Kit

BCR-ABL-Q Real Time PCR Kit helps in the detection of BCR-ABL breakpoint gene fusion transcripts in total RNA isolate from Research samples i.e. bone marrow & peripheral blood samples.

#### Breakpoint Gene Fusion Transcripts

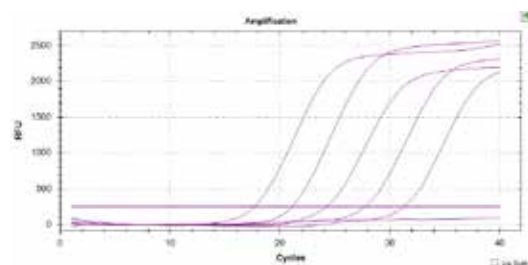
- Major-BCR [M-p210-[e14a2 & e13a2]]
- Minor-BCR (M-p190-[e1a2])
- Micro-BCR (M-p230-[e19a2])
- BCR-ABL Fusion Gene [chromosome 9 and chromosome 22 (Translocation)]



Amplification profile of BCR-ABL positive sample (FAM channel) along with Internal Control (ABL1) (Texas Red channel) on POC device

### PML-RARA-Q Real Time PCR Kit

- PML-RARA-Q Real Time PCR Kit is a nucleic acid amplification assay for quantitative detection of PML-RARA t(15;17) translocation in human Research samples
- Multiplex detection assay for identification & differentiation of Long (bcr1), Variant (bcr2) and Short (bcr3) fusion transcripts along with Internal Control



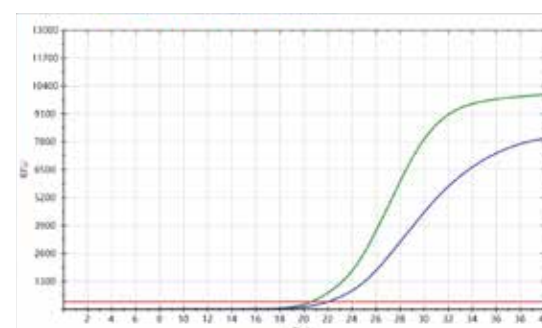
PML-RARA real time PCR specific amplification plot of PML-RARA standard

### HLA B27-Q Real Time PCR Kit

- Target : B locus in the MHC on chromosome 6
- Rapid and reliable detection of HLA- B27 (FAM channel) & Internal control (Cy5 channel)

Human leukocyte antigen (HLA) B27 is majorly found in patients suffering with Ankylosing Spondylitis (AS) which is a type of arthritis that affects the spine.

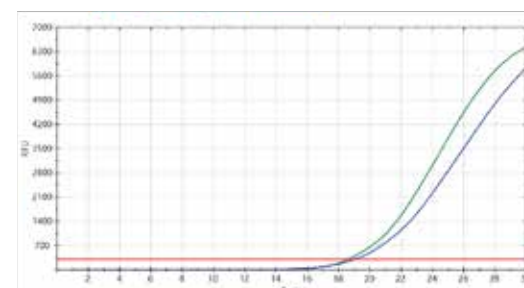
Although it can occur at any age, spondylitis most often strikes men in their teens and 20s. Traditionally "AS" has been considered a disease that affects mostly men, yet in reality, it also affects many women. People who are HLA-B27 positive are also more likely to experience early onset "AS" than HLA-B27 negative individuals.



Amplification profile of HLA B27 positive sample (FAM channel) along with Internal Control (Cy5 channel) on POC device

### Jak2-Q Real Time PCR Kit

- JAK2-Q Real Time PCR Kit is an in vitro Screening test for the qualitative detection of mutation in JAK2 gene in DNA extracted from Research samples
- Single tube assay, targeting sequences to detect V617F mutation ie. Point mutation 1849 (G→T) V617F in the JAK2 gene



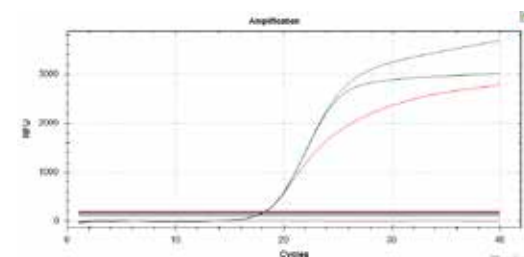
Amplification profile of JAK-2 positive sample (FAM channel) along with Internal Control (Cy5 channel) on POC device

## Infectious Diseases Detection Solutions



### Influenza A/B-Q (H1N1 & H3N2) Real Time PCR Kit

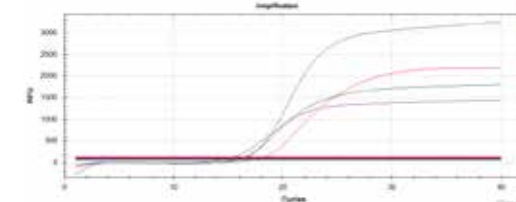
- Multiplex kit for simultaneous detection & differentiation of Influenza A, Influenza B & Influenza A subtypes H1N1 & H3N2 virus specific RNA along with Internal control
- Gene Targets covered
  - Influenza A- Matrix protein 2 gene
  - Influenza B- Hemagglutinin (HA) gene
  - Influenza A Subtypes- H1N1 & H3N2 (HA) gene



Amplification profile of Influenza A/B-Q positive control (Tube 1)

### Para2-Q Real Time PCR Kit (Tropical Diseases Fever Panel)

- Identification & differentiation of various vector borne transmission diseases
- Pathogens covered: Dengue, Chikungunya, Zika, Y. Fever, W. Nile & J. Encephalitis; along with parallel detection of Endogenous control

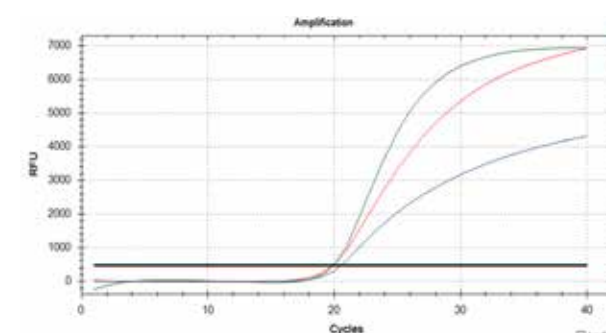


Amplification profile of Spiked positive control of Dengue, Chikungunya, Zika (Tube 1)

### CoVFlu One Step RT PCR Kit

CoVFlu is a unique detection kit for highly contagious respiratory diseases caused by three different viruses i.e. SARS-CoV-2, RSV and Influenza A/B. These viruses spread via similar ways (respiratory droplets/aerosols) and show common signs and symptoms of infection ranging from mild to severe.

Since, the severity of spread, illness, complications and mortality rate is much higher in COVID-19; there is a need for accurate detection of Influenza A/B, RSV & SARS-CoV-2 for effective treatment and drugs.



Amplification profile of CoVFlu positive control

Infectious Diseases Detection Solutions



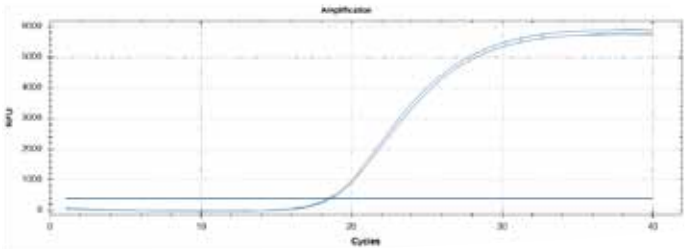
Sepsis-Q Real Time PCR Kit

- Syndrome commonly caused by inflammatory response of immune system as a result of bacterial, viral, protozoan or fungal infections.
- Highly comprehensive assay for detection of 19 causative organisms including:

<ul style="list-style-type: none"><li>• Staphylococcus aureus</li></ul>	<ul style="list-style-type: none"><li>• CoNS pathogens-Staphylococcus epidermidis and Staphylococcus haemolyticus</li></ul>	<ul style="list-style-type: none"><li>• Streptococcus spp. S. pyogenes &amp; S. agalactiae</li></ul>
<ul style="list-style-type: none"><li>• Acinetobacter baumannii</li></ul>		
<ul style="list-style-type: none"><li>• Aspergillus fumigatus</li></ul>	<ul style="list-style-type: none"><li>• Enterococcus faecium</li></ul>	<ul style="list-style-type: none"><li>• Streptococcus pneumoniae</li></ul>
<ul style="list-style-type: none"><li>• E. coli</li></ul>		
<ul style="list-style-type: none"><li>• Pseudomonas aeruginosa</li></ul>	<ul style="list-style-type: none"><li>• Listeria monocytogenes</li></ul>	<ul style="list-style-type: none"><li>• Stenotrophomonas maltophilia</li></ul>
<ul style="list-style-type: none"><li>• Klebsiella pneumoniae</li></ul>	<ul style="list-style-type: none"><li>• Enterobacter cloacae</li></ul>	<ul style="list-style-type: none"><li>• Candida albicans</li></ul>
	<ul style="list-style-type: none"><li>• Enterococcus faecalis</li></ul>	<ul style="list-style-type: none"><li>• Candida nonalbicans- Candida parapsilosis, Candida tropicalis, and Candida krusei</li></ul>

Anti Microbial Resistance/ AMR (MDR-Q Real Time PCR Kit)

- Allows *in vitro* qualitative detection of **Klebsiella pneumoniae (KPN)**, **Acinetobacter baumannii (Aba)**, and **Pseudomonas aeruginosa (PA)**, along with four carbapenem resistance genes (**KPC**, **NDM**, **OXA48**, and **IMP**).
- Also detects **Staphylococcus aureus** and **methicillin-resistant Staphylococcus aureus (MRSA)** nucleic acids
- Compatible sample types - human sputum, skin and soft tissue infection samples, and whole blood samples.



Amplification curve represents positive result for Carbapenem resistance gene i.e. VIM.

Broad Range of High Sensitivity Kits

Commercial Name	Cat No.	Pack Size
<b>Oncology</b>		<b>RapiQ</b>
PML-RARA Real Time PCR Kit	G2MBR4-0452	48 Tests
BCR-ABL Real Time PCR Kit	G2MBR4-0453	48 Tests
HLA-B27-Q Real Time PCR Kit	G2MBR4-0454	48 Tests
JAK-2-Q Real Time PCR Kit	G2MBR4-0455	48 Tests
<b>Mycobacterium Tuberculosis Detection</b>		
MTC-Q Real Time PCR Kit (Tbdtect)	G2MBR4-0456	48 Tests
TB Comprehensive Real Time PCR Kit (TBfind)	G2MBR4-0457	48 Tests
MTB-NTM Multiplex Real Time PCR Kit (Tbdtect Advanced)	G2MBR4-0458	48 Tests
<b>Respiratory Disease Diagnostics</b>		
Influenza A/B-Q Real Time PCR Kit	G2MBR4-0459	48 Tests
B. Pertussis-Q Real Time PCR Kit	G2MBR4-0460	48 Tests
S. Pneumonia-Q Real Time PCR Kit	G2MBR4-0461	48 Tests
M. Pneumonia-Q Real Time PCR Kit	G2MBR4-0462	48 Tests
Measles-Q Real Time PCR Ki	G2MBR4-0463	48 Tests
Adeno-Q Real Time PCR Kit	G2MBR4-0465	48 Tests
MERS-Q Real Time PCR Kit	G2MBR4-0466	48 Tests
RSV-Q Real Time PCR Kit	G2MBR4-0467	48 Tests
<b>COVID Detection</b>		
COVIDtect Multiplex RT PCR Kit for COVID-19	G2MBR4-0468	48 Tests
Rapi-Q Multiplex Real Time PCR Kit for COVID-19	G2MBR4-0469	48 Tests
COVFlu One Step RT PCR Kit	G2MBR4-0470	48 Tests
CoVFlu-II One Step RT PCR Kit	G2MBR4-0471	48 Tests
<b>Reproductive Health</b>		
Human Papilloma Virus (HPV)-Q Real Time PCR Kit	G2MBR4-0472	48 Tests
HPV-Q comprehensive Real Time PCR Kit	G2MBR4-0473	48 Tests
N. Gonorrhoeae (NG)-Q Real Time PCR Kit	G2MBR4-0474	48 Tests
T. Vaginalis (TV)-Q Real Time PCR Kit	G2MBR4-0475	48 Tests
U. Urealyticum-Q Real Time PCR Kit	G2MBR4-0476	48 Tests
M. Hominis (MH)-Q Real Time PCR Kit	G2MBR4-0477	48 Tests
Syphilis-Q Real Time PCR Kit	G2MBR4-0478	48 Tests
STI7-Q Real Time PCR Kit	G2MBR4-0479	48 Tests
STI-Q comprehensive Real Time PCR Kit	G2MBR4-0480	48 Tests
HSV-Q Real Time PCR Test Kit	G2MBR4-0481	48 Tests
Toxo-Q Real Time PCR Kit	G2MBR4-0482	48 Tests
C.Trachomitas-Q Real-Time PCR Kit	G2MBR4-0745	48 Tests
<b>Other Infectious Diseases</b>		
H. Pylori-Q Real Time PCR Kit	G2MBR4-0484	48 Tests
BK-Q Real Time PCR Kit for BK virus	G2MBR4-0485	48 Tests
EBV-Q Real Time PCR Kit	G2MBR4-0486	48 Tests
Nipah-Q Real Time PCR Kit	G2MBR4-0487	48 Tests
Rota-Q Real Time PCR Kit	G2MBR4-0488	48 Tests
VZV-Q Real Time PCR Kit	G2MBR4-0489	48 Tests
Human Parvovirus (B19)-Q Real Time PCR Kit	G2MBR4-0490	48 Tests
C. Albicans (CA)-Q Real Time PCR Kit	G2MBR4-0491	48 Tests
Rubella-Q Real Time PCR Kit	G2MBR4-0492	48 Tests
CMV-Q Real Time PCR Kit	G2MBR4-0493	48 Tests
GCP-Q comprehensive Real Time PCR Kit	G2MBR4-0495	48 Tests
Sepsis-Q Real Time PCR Kit	G2MBR4-0497	48 Tests
<b>Blood Borne Diseases</b>		
HBV-Q Real Time PCR Test Kit	G2MBR4-0498	48 Tests
HCV-Q Real Time PCR Kit	G2MBR4-0499	48 Tests
HIV-Q Real Time PCR Test Kit	G2MBR4-0500	48 Tests
3H-Q Real Time PCR Kit for HIV,HCV and HBV	G2MBR4-0501	48 Tests
<b>Vector Borne Transmission Detection</b>		
Dengue-Q Real Time PCR Ki	G2MBR4-0502	48 Tests
Malaria-Q Real Time PCR Kit	G2MBR4-0503	48 Tests
Chikungunya-Q Real Time PCR Test Kit	G2MBR4-0504	48 Tests
Zika-Q Real Time PCR kit	G2MBR4-0505	48 Tests
Y. Fever-Q Real Time PCR kit	G2MBR4-0506	48 Tests
J. Encephalitis-Q Real Time PCR kit	G2MBR4-0507	48 Tests
W. Nile-Q Real Time PCR kit	G2MBR4-0508	48 Tests
Para-Q Multiplex Real Time PCR kit	G2MBR4-0509	48 Tests
Para2-Q Real Time PCR Kit	G2MBR4-0510	48 Tests
<b>Genetic Disorders</b>		
SCA-Q Real Time PCR Kit	G2MBR4-0511	48 Tests